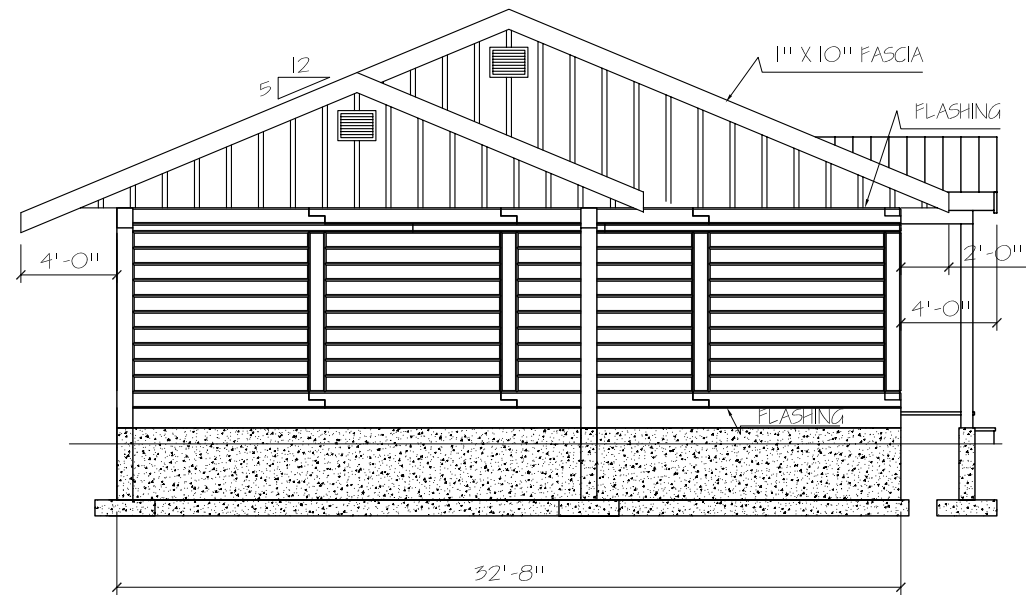


FRONT ELEVATION

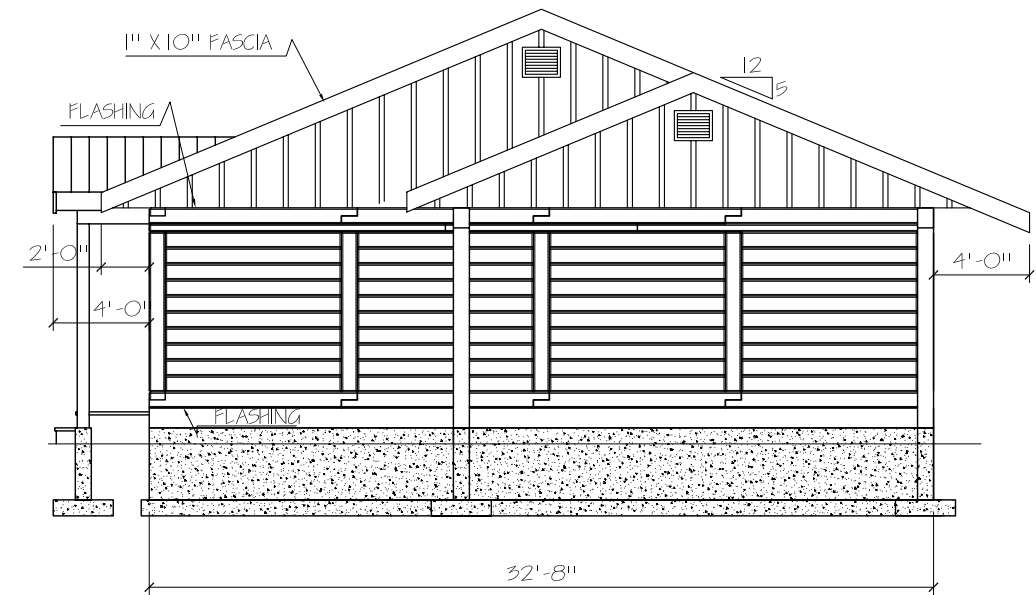


SCALE: 1/8" = 1'-0"	DRAWN BY: P HALPER
DATE: 08 MAR 2011	REVISED:
CARIBOO DUPLEX	
FRONT ELEVATION	DRAWING NUMBER CARIBOOD-001

REV



LEFT ELEVATION



RIGHT ELEVATION

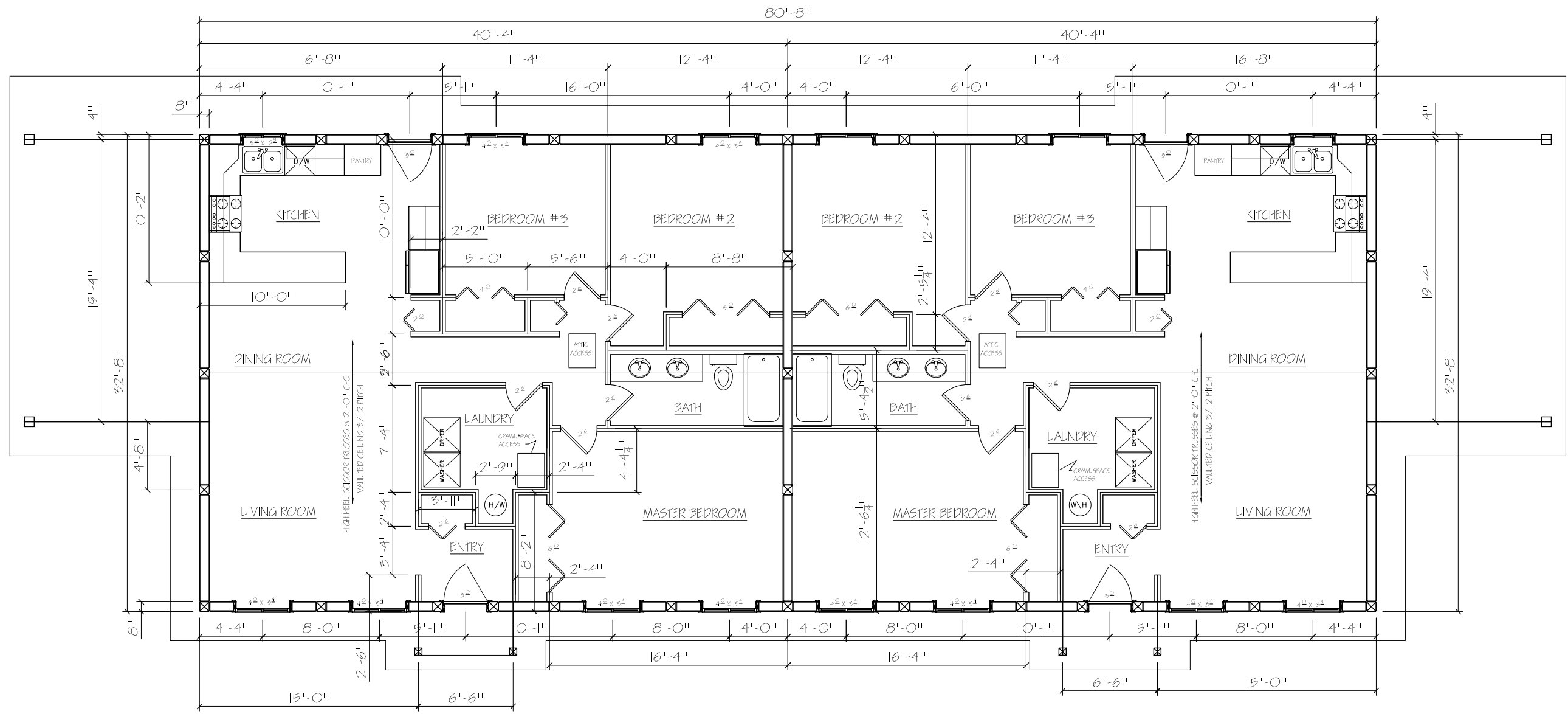


SCALE: 1/8" = 1'-0"	DRAWN BY: P. HALPER	
DATE: 08 MAR 2011	REVISED:	
CARIBOO DUPLEX		REV
RIGHT AND LEFT ELEVATION	DRAWING NUMBER CARIBOOD-002	



SCALE: 1/8" = 1'-0"	DRAWN BY: P. HALPER
DATE: 08 MAR 2011	REVISED:
CARIBOO DUPLEX	
REAR ELEVATION	DRAWING NUMBER CARIBOOD-003

REV



FLOOR PLAN
FLOOR AREA 1328 SQFT PER UNIT



SCALE: 1/8" = 1'-0"	DRAWN BY: P. HALPER
DATE: 08 MAR 2011	REVISED:
CARIBOO DUPLEX	
MAIN FLOOR PLAN	DRAWING NUMBER CARIBOOD-004

REV